



1st SOUTH AMERICAN YOUTH CHAMPIONSHIP

18 to 24 November
Buenos Aires, Argentina.

SAILING INSTRUCTIONS

Amendment 1 – Changes on SIs 4.6, 11, 12.3, 18.3 and 18.5 shown in RED
Amendment 2 – Changes on SIs Changes on SIs 2.1, 2.3, 4.2, 10.1 shown in GREEN

1. RULES

- 1.1 The event is governed by the *rules* as defined in the *Racing Rules of Sailing* (RRS).
- 1.2 No national authority prescriptions will apply.
- 1.3 RRS Appendix P, Special Procedures for Rule 42, will apply.
- 1.4 For the Men's Skiff and Women's Skiff, RRS 44.1 and RRS P2.1 are changed so that the Two-Turns Penalty is replaced by the One-Turn Penalty.
- 1.5 Appendix T, Arbitration, will apply.
- 1.6 Class rules regarding membership will not apply.
- 1.7 Decisions of the International Jury will be final as provided in RRS 70.5.
- 1.8 A boat shall neither make radio transmissions while racing nor receive radio communications not available to all boats, except in an emergency or when using equipment provided by the race committee. This restriction also applies to mobile telephones.
- 1.9 In RRS 44.2 insert after the first sentence: However, if Mark 1a is set, a boat may delay taking a penalty for an incident in the zone around Mark 1 or on the leg between Mark 1 and Mark 1a, until she has passed Mark 1a.
- 1.10 Boats are required to display Advertising and/or event branding in accordance with instructions issued by the Organizing Authority.
- 1.11 In all rules governing this event:
 - Both '*athlete*' and '*competitor*' mean a person competing or intending to compete in the event.
 - The term '*support team*' means coaches, team leaders and other support personnel.
 - [SP] denotes a rule for which a standard penalty applies. May be applied by the race committee without a hearing (this changes RRS 63.1 and RRS A5).
 - [DP] denotes a rule for which the penalty is at the discretion of International Jury.
 - [NP] denotes a rule that shall not be grounds for protests by a boat. This changes RRS 60.1(a);
- 1.12 If there is a conflict between languages the English text will take precedence.
- 1.13 If there is a conflict between Notice of Race (NoR) and Sailing Instructions (SI), Sailing Instructions (SI) will take precedence.
- 1.14 For IQFoil only, new RRS rule 29.3 is added as follows:
 - When, at the warning signal, the course to the first mark is approximately ninety degrees from the true wind then,
 - (a) When at the starting signal the race committee identifies a board on the course side of the starting line, the race committee shall signal a general recall.
 - (b) If the race committee acts under rule SI 1.14(a) and the board is identified, she shall be Disqualified without a hearing, even if the race is abandoned. The race committee shall hail or display her sail number, and she shall leave the course area immediately. If the race is restarted or resailed, she shall not sail in it.

2. [DP] [NP] SAFETY REGULATIONS

- ~~2.1 [DP] RRS 40.1 applies at all times while afloat except for all athletes, when not racing and alongside a registered support vessel which has its engine off. Deleted.~~
- 2.2 Boats not leaving the harbor for a scheduled race shall promptly notify Race Officials Secretariat.
- 2.3 [SP] [NP] A boat that retires from racing shall notify the Race Committee before leaving the race area if possible and shall **inform the Race Committee of his retirement by completing a Competitor's Declaration Form found on the ONB section of the event website**, as soon as possible after returning ashore.

3. [DP] CODE OF CONDUCT

- 3.1 Athletes and support persons shall:
- 3.1.1 comply with any reasonable request from a regatta official;
 - 3.1.2 handle any boats and equipment provided by the Organizing Authority with proper care and seamanship, without interfering with its functionality, and in compliance with the ER; and
 - 3.1.3 not in any way interfere with the functionality of supplied media or timing equipment.
- 3.2 [SP] Boats not racing shall avoid the area where boats are racing and any official vessel.
- 3.3 [SP] Boats that are on a race area to which they are not assigned shall avoid the area where boats are racing and any official vessel.
- 3.4 Organizing Authority may reduce or remove a prize in the case of misconduct or refusal to comply with any reasonable request, including attendance at official functions.
- 3.5 [DP] SUPPORTBOAT ZONE
- 3.5.1 Support Boats shall not be positioned:
 - 3.5.1.a Closer than 100 meters of any boat racing
 - 3.5.1.b Within 100 meters to leeward of the starting line and it's extensions from the time of the preparatory signal until all boats have left the starting area, or the race committee signals a postponement, general recall or abandonment;
 - 3.5.1.c Between any boat racing and the next mark of the course;
 - 3.5.1.d Between the inner and outer trap courses when boats are racing on both courses;
 - 3.5.1.e Within 100 meters of any mark while boats are in the vicinity of that mark;
 - 3.5.1.f Within 100 meters of the finishing line and marks while boats are finishing

4. COMMUNICATIONS WITH ATHLETES

- 4.1 4.1 Notices will be posted on the Official Notice Board (ONB) which will be online at the following web: <https://cuba.roms.ar/ysa2022/>
- All the information published by International Jury will be posted on this same ONB.
- 4.2 Notices **and Documents** will also be posted at the official Telegram group (<https://t.me/+BXH43zDBBllhM2Jh>) and on the board located between the two changing rooms main hall access. Failure to post a notice on the Telegram and/or the board between the two changing rooms main hall access will not be grounds for redress. This changes RRS 62.

- 4.3 Flag L will only be displayed ashore when a notice affecting that day's racing is posted which:
- 4.3.1 makes a change of race area;
 - 4.3.2 makes a change of warning signal time; or
 - 4.3.3 changes a sailing instruction, This changes Race Signals.
- 4.4 Signals ashore will be displayed from the Official Signal Mast located at boat park in front of the central ramp.
- 4.5 When flag AP is displayed ashore, '1 minute' is replaced with the times in minutes shown below in the Race Signal AP.

Race Area	Race Signal AP not less than time
A	60
B	40

- 4.6 [SP] [NP] **On a day with schedule races**, a boat shall not leave the shore until her class flag is displayed ashore. The warning signal will be made not less than the time in minutes shown below after her class flag is displayed or not before the schedule time, whichever is later.

Race Area	Warning Signal not less than
A	60
B	40

- 4.7 [DP] When flags AP over H or N over H are displayed from a Race Committee vessel, all boats shall immediately return ashore and shall wait there for further signals. (This changes Race Signals AP over H and N over H.)

5. CHANGES TO SAILING INSTRUCTIONS

- 5.1 Except for changes to the schedule of races and race area assignments, changes to the Sailing Instructions will be posted either:
- 5.1.1 no later than 2 hours before the scheduled time of the first race affected; or
 - 5.1.2 no later than 15 minutes before flag AP ashore is removed for a race that is affected.

6. EVENT SCHEDULE

- 6.1 The Championship schedule will be as follows:

Day	hs	activity
November 18th	10 hs to 17 hs	Inscription check.
November 19th	10 hs to 17 hs	Inscription check.
	16 hs	Practice Race.
	18 hs	Open ceremony.
November 20	10 hs	Competitors meeting.
November 20, 21, 22 and 23	Appendix B	Races.
November 22	18 hs	After race.
November 24th	Appendix B	Races.
	18 hs	Closing Ceremony, Depart day.

- 6.2 The format for each Event consists of an opening series

6.3 Opening Series

For the opening series of each Event the number of races scheduled is as follows:

Event	Number of Races	Maximum Races per Day
Men's One Person Dinghy (U19) Women's One Person Dinghy (U19) Men's Two Person Dinghy (U19) Women's Two Person Dinghy (U19) Open Two Person Dinghy	10	3
Men's iQFOiL (U19) Women's iQFOiL (U19)	18	6
Men's Skiff (U19) Women's Skiff (U19) Open Skiff	15	4

7. [DP][SP] RACE AREAS AND FIELD OF PLAY

- 7.1 Race areas will be two: race area A for ILCA 6 and 420 and the race area B for iQFOiL and 29er.
- 7.2 All boats shall remain in the Field of Play at all times whilst afloat.

8. SCHEDULE OF RACES AND RACE AREA ASSIGNMENTS

- 8.1 The Race Committee may reassign an Event to any race area no later than 2 hours before the scheduled starting signal. However:
 - 8.1.1 when flag AP is displayed ashore, the race area may be changed by posting a notice until 15 minutes before the AP is removed; and
 - 8.1.2 when flag AP is displayed afloat, the race area may be changed. The Race Committee will display flag L over the Event(s) flag and move to the new race area.
- 8.2 Schedule is shown on SI Appendix B
- 8.3 The last day of racing, no Attention Signal will be made before 16.00hs

9. COURSES

- 9.1 The diagrams in SI Appendix C show the courses, the course designations, the approximate angles between legs, the order in which marks are to be passed, and the side on which each mark is to be left.
- 9.2 Courses will not be shortened. This changes RRS 32.

10. MARKS

- 10.1 Marks 1, 2, 3, and 4, or associated gate marks, will be cylindrical inflatable buoys as follows:

Race Area	Marks 1, 2, 3, 4	New Mark for Marks 1 & 2	VHF Channels
A	Orange	Yellow	69
B	Pink	Yellow	65

- 10.2 Mark 1a will be a pink cylindrical buoy.

- 10.3 The starting and finishing line marks will be race committee vessels or inflatable marks.
- 10.4 The starting mark will be orange with a white stripe; the finish mark will be blue.
- 10.5 In the event that a gate mark is missing and has not been replaced with an object displaying flag M, the remaining mark shall be rounded to port.

11. EVENT FLAGS

Event flags will be **as follows**:

Event	Class Insignia	Background Colour
Men's iQFOiL	Code Flag G	Code Flag G
Women's iQFOiL	Code Flag G	Code Flag G
Men's One Person Dinghy	ILCA 6	Light green
Women's One Person Dinghy	ILCA 6	Light green
Men's Two Person Dinghy	420	White
Women's Two Person Dinghy	420	White
Open Two Person Dinghy	420	White
Men's Skiff	29er	White
Women's Skiff	29er	White
Open Skiff	29er	White

12. THE START

- 12.1 The starting line will be between a staff displaying an orange flag on the race committee vessel at the starboard end and either
 - 12.1.1 the course side of the port-end inflatable starting mark, or
 - 12.1.2 a staff displaying an orange flag on the race committee vessel at the port end.
- 12.2 [DP] A buoy may be attached to the race committee starting vessel anchor line just below keel depth. Boats shall not pass between this buoy and the race committee starting vessel at any time. This buoy is part of the race committee starting vessel ground tackle.
- 12.3 [DP] When a starting sequence is in progress, boats whose warning signal has not been made shall avoid the starting area. The starting area is defined as the area **100** meters from the starting line and marks in all directions.
- 12.4 The race will start using the RRS 26 and preparatory signals. Times shall be taken from the display of visual signals and the absence of a sound signal shall be disregarded. For IQFoil warning single will be display 3 minutes before start
- 12.5 , and preparatory signal will be display 2 minutes before start. This change RRS 26.
- 12.6 To alert boats that a race or sequence of races will begin soon, the orange starting line flag will be displayed with 1 sound at least 5 minutes before a warning signal is made. Except for IQFoil, that will be displayed with 1 sound at least 2 minutes before a warning signal is made
- 12.7 The warning signal for each succeeding race will be made as soon as practicable.
- 12.8 A boat starting later than 4 minutes after her starting signal will be scored Did Not Start. This changes RRS A5.

13. COURSE CHANGES

- 13.1 To change the next leg of the course, the Race Committee will (a) lay a new mark, or (b) move the finishing line, or (c) move the leeward gate. When a new mark is laid, the original mark will be removed as soon as possible. When in a subsequent change a new mark is replaced, it will be replaced by an original mark. When Mark 1 has been replaced, Mark 1a is no longer a mark of the course. It will be removed as soon as practicable. This changes RRS 33.

14. THE FINISH

- 14.1 The finishing line will be between a staff displaying a blue flag on the race committee vessel and either the course side of the nearby inflatable finishing mark, or a staff displaying a Blue flag on the nearby race committee vessel.

15. TIME LIMITS AND TARGET TIMES

- 15.1 For opening series races, time limits and target times in minutes are as follows:

Event	Time Limit	Mark 1 Time Limit	Finish Window	Target Time
Men's iQFOiL	45	20	10	20
Women's iQFOiL	45	20	10	20
Men's One Person Dinghy	75	25	15	50
Women's One Person Dinghy	75	25	15	50
Men's Two Person Dinghy	75	25	15	45
Women's Two Person Dinghy	75	25	15	45
Men's Skiff	50	20	10	30
Women's Skiff	50	20	10	30

- 15.2 If no boat passes Mark 1 before the Mark 1 Time Limit the race will be abandoned.
- 15.3 Boats failing to finish within the time stated in the Finish Window after the first boat sails the course and finishes will be scored Did Not Finish. This changes RRS 35, A4 and A5.

16. [DP] EQUIPMENT AND EQUIPMENT INSPECTION

- 16.1 The Equipment Rules of Sailing govern all equipment and equipment inspection matters.
- 16.2 In the event of a conflict between the ER and the Class Rules, the ER shall take precedence. This amends RRS 63.7.

17. OFFICIAL VESSELS

- 17.1 Official vessels will be marked as follows:

Technical Committee	Yellow flag with 'M' in black
International Jury	White flag with 'J' in black
Principal Race Officer	White flag with 'PRO' in black
All other official Boats	Green and White checkerboard

- 17.2 A boat shall not request redress due to the actions by any official vessel, drone or helicopter. This changes RRS 60.1(b).

18. SCORING

- 18.1 The Low Point System of RRS Appendix A will apply. RRS B8 is deleted.
- 18.2 1 race is required to be completed to constitute an Event.
- 18.3 Deleted.
- 18.4 Each class shall compete in one fleet (men and woman together) and the men, woman, U19 and Open, shall be calculated by extraction on bases of the general classification of that category.
- 18.5 To request a correction of an alleged error in posted race or series results, a boat shall complete and submit a scoring enquiry available in the ONB (<https://cuba.roms.ar/ysa2022/>).

19. PROTESTS, PENALTIES AND REQUESTS FOR REDRESS

- 19.1 Hearing request shall be delivered at the ONB (<https://cuba.roms.ar/ysa2022/>). Protests and requests for redress or reopening shall be delivered at the ONB before the appropriate time limit.
- 19.2 The protest time limit for each Event is the number of minutes shown below after either a) the last boat has finished the last race of the day, or b) the Race Committee signals no more racing today, whichever is the later.

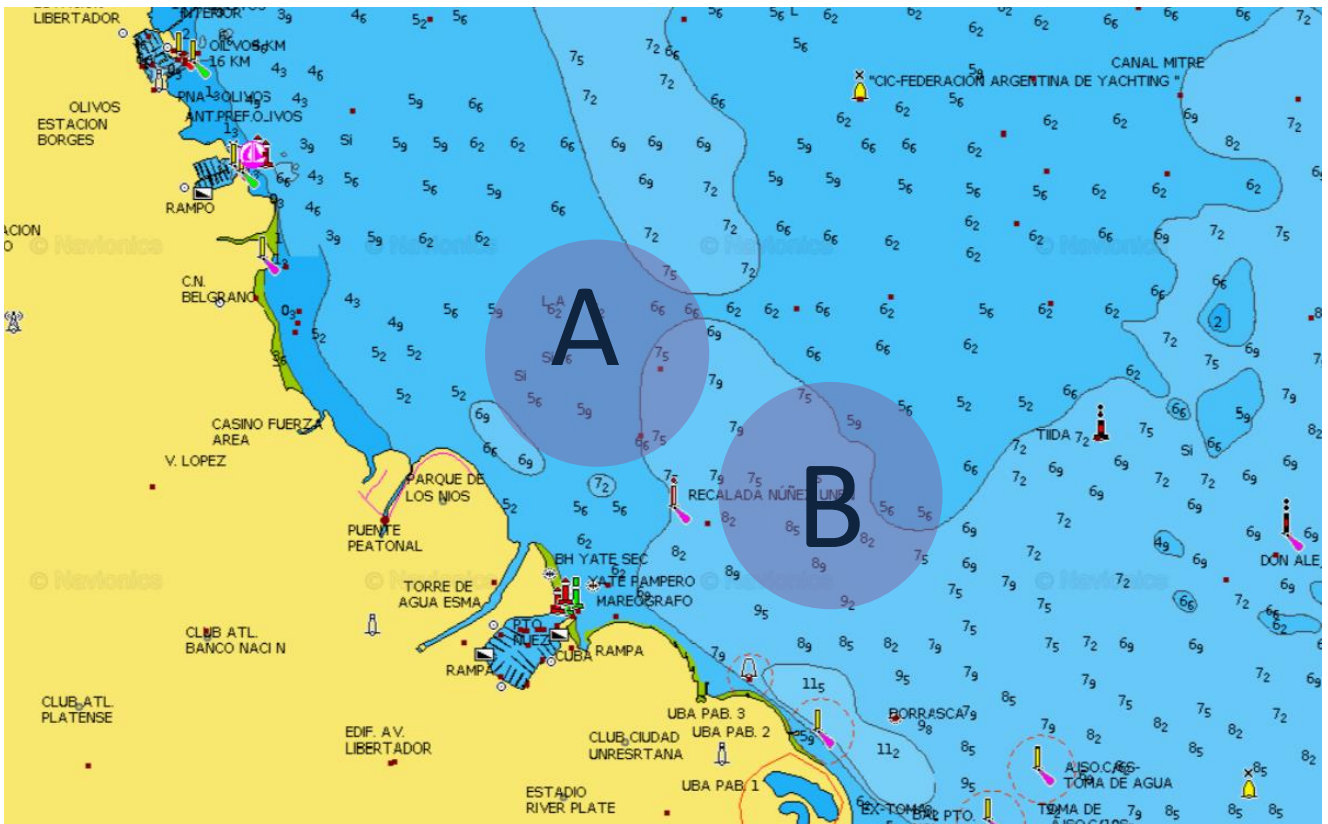
Race Area	Time
A	60
B	60

- 19.3 A request for redress based on an incident identified in a scoring enquiry will meet the time limit if:
- 19.3.1 the scoring enquiry was delivered within the time limit specified in RRS 62.2 as changed by SIs 19.2; and
- 19.3.2 the request for redress is delivered as soon as reasonably possible after being notified of the race committee's response to the scoring enquiry. The response by the race committee may be notified in writing or through the online system. This changes RRS 62.2.
- 19.4 Notices will be posted on the ONB within 30 minutes of the protest time limit to inform competitors of hearings in which they are parties or named as witnesses. Hearings will be held in the stated room beginning at the time posted. Hearings may be scheduled to begin up to 30 minutes before the protest time limit.
- 19.5 A list of boats that have been penalized under Appendix P for breaking RRS 42 and under SI 19.8 will be posted.
- 19.6 Penalties for breaches of the class rules, or rules in the NoR and SIs marked [DP], or [SP] should the case go to a hearing, are at the discretion of the International Jury and may be less than disqualification.
- 19.7 Breaches of rules in the SIs or NoR marked [NP] shall not be grounds for a protest by a boat. This changes RRS60.1(a).
- 19.8 For breaches of a rule marked [SP], or listed in the list of standard penalties, the Race Committee or Technical Committee may apply a standard penalty without a hearing or a discretionary penalty may be applied by the International Jury with a hearing. A list of these breaches and the associated standard penalties will be posted on the Official Notice Board. However, the Race Committee or Technical Committee may protest a boat if it considers a standard penalty is inappropriate. A boat that has been penalized with a standard penalty shall neither be protested by another boat for the

same incident nor can another boat request redress for this committee action. This changes RRS 60.1, 63.1 and A5.

- 19.9 When a penalty is given under SI 19.6 or SI 19.8 before a race is started, the penalty will remain if that race is restarted or resailed. This changes RRS 36.
- 19.10 In RRS 62.2(a) and 66.2(a) change 'the last scheduled day of racing' to 'on the last scheduled day of the opening series for each Event'.

SI Appendix A Race Areas



Race area A: ILCA 6 and 420

Race area B: iQFOiL and 29er

The locations of the racing areas shown above are indicative and may be changed significantly by the Organizing Authority should they prove to be unsuitable.

Depths shown in feet

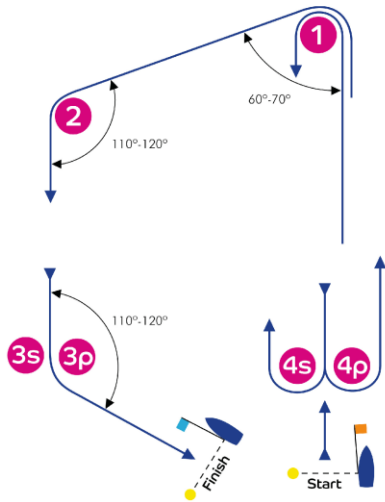
SI Appendix B

Competition Schedule

	Saturday, 19 November 2022		Sunday, 20 November 2022		Monday, 21 November 2022		Tuesday, 22 November 2022		Wednesday, 23 November 2022		Thursday, 24 November 2022	
	Race Area Warning Signal (practice race)	#	Race Area Warning Signal	#	Race Area Warning Signal	#	Race Area Warning Signal	#	Race Area Warning Signal	#	Race Area Warning Signal	#
Men's iQFOiL	B 1600hs	1	B 1500hs	4	B 1500hs	4	B 1500hs	4	B 1500hs	4	B 1500hs	2
Women's iQFOiL	B 1600hs	1	B 1500hs	4	B 1500hs	4	B 1500hs	4	B 1500hs	4	B 1500hs	2
Men's ILCA 6	A 1600hs	1	A 1200hs	2	A 1200hs	2	A 1200hs	2	A 1200hs	2	A 1200hs	2
Women's ILCA 6	A 1600hs	1	A 1200hs	2	A 1200hs	2	A 1200hs	2	A 1200hs	2	A 1200hs	2
Men's 420	A 1600hs	1	A 1200hs	2	A 1200hs	2	A 1200hs	2	A 1200hs	2	A 1200hs	2
Women's 420	A 1600hs	1	A 1200hs	2	A 1200hs	2	A 1200hs	2	A 1200hs	2	A 1200hs	2
Men's 29er	B 1600hs	1	B 1200hs	3	B 1200hs	3	B 1200hs	3	B 1200hs	3	B 1200hs	3
Women's 29er	B 1600hs	1	B 1200hs	3	B 1200hs	3	B 1200hs	3	B 1200hs	3	B 1200hs	3

SI Appendix C Course Diagrams

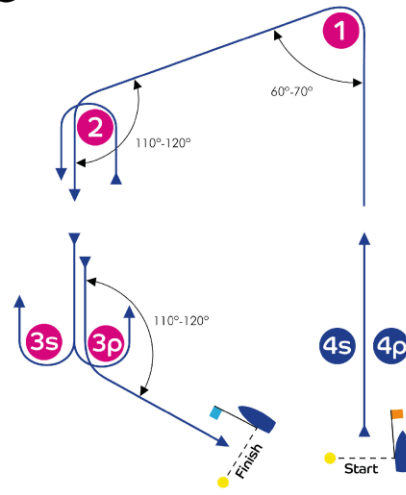
I



Course: Inner Trapezoid

Signal	Mark Rounding Order
I2	Start - 1 - 4s/4p - 1 - 2 - 3p - Finish
I3	Start - 1 - 4s/4p - 1 - 4s/4p - 1 - 2 - 3p - Finish
I4	Start - 1 - 4s/4p - 1 - 4s/4p - 1 - 4s/4p - 1 - 2 - 3p - Finish

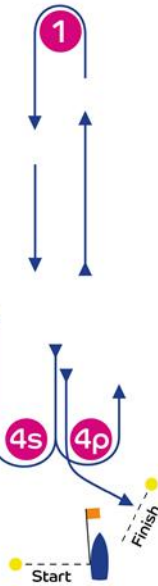
O



Course: Outer Trapezoid

Signal	Mark Rounding Order
O2	Start - 1 - 2 - 3s/3p - 2 - 3p - Finish
O3	Start - 1 - 2 - 3s/3p - 2 - 3s/3p - 2 - 3p - Finish
O4	Start - 1 - 2 - 3s/3p - 2 - 3s/3p - 2 - 3s/3p - 2 - 3p - Finish

LR



Course: Windward/Leeward

Signal	Mark Rounding Order
LR2	Start - 1 - 4s/4p - 1 - 4p - Finish
LR3	Start - 1 - 4s/4p - 1 - 4s/4p - 1 - 4p - Finish
LR4	Start - 1 - 4s/4p - 1 - 4s/4p - 1 - 4s/4p - 1 - 4p - Finish

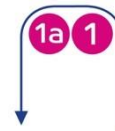
LA



Course: Same as Course L except with Offset Mark 1A

Signal	Mark Rounding Order
LA2	Start - 1 - 1a - 4s/4p - 1 - 1a - Finish
LA3	Start - 1 - 1a - 4s/4p - 1 - 1a - 4s/4p - 1 - 1a - Finish
LA4	Start - 1 - 1a - 4s/4p - 1 - 1a - 4s/4p - 1 - 1a - 4s/4p - 1 - 1a - Finish

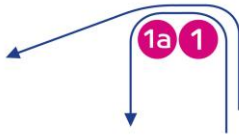
LR A



Course: Same as Course LR except with Offset Mark 1A

Signal	Mark Rounding Order
LR A2	Start - 1 - 1a - 4s/4p - 1 - 1a - 4p - Finish
LR A3	Start - 1 - 1a - 4s/4p - 1 - 1a - 4s/4p - 1 - 1a - 4p - Finish
LR A4	Start - 1 - 1a - 4s/4p - 1 - 1a - 4s/4p - 1 - 1a - 4s/4p - 1 - 1a - 4p - Finish

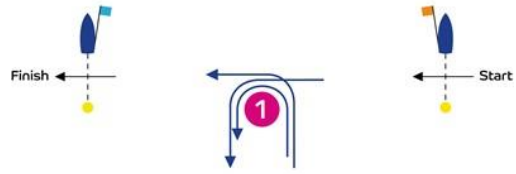
IA



Course: Same as Course I except with Offset Mark 1A

Signal	Mark Rounding Order
IA2	Start - 1 - 1a - 4s/4p - 1 - 1a - 2 - 3p - Finish
IA3	Start - 1 - 1a - 4s/4p - 1 - 1a - 4s/4p - 1 - 1a - 2 - 3p - Finish
IA4	Start - 1 - 1a - 4s/4p - 1 - 1a - 4s/4p - 1 - 1a - 4s/4p - 1 - 1a - 2 - 3p - Finish

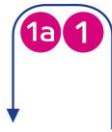
WRS



Course: Windward/Leeward with Reaching Start/Finish

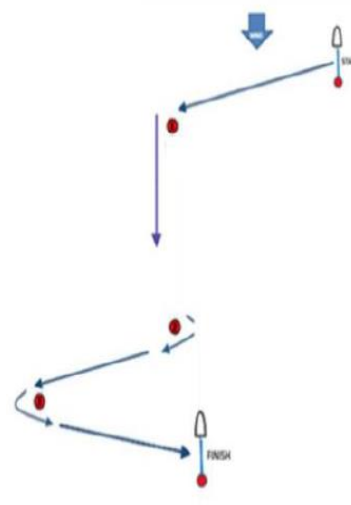
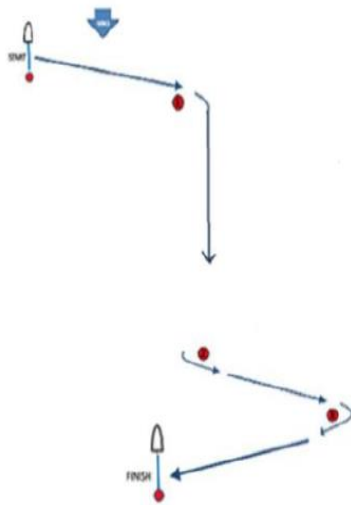
Signal	Mark Rounding Order
WRS1	Start - 1 - 4s/4p - 1 - Finish
WRS2	Start - 1 - 4s/4p - 1 - 4s/4p - 1 - Finish
WRS3	Start - 1 - 4s/4p - 1 - 4s/4p - 1 - 4s/4p - 1 - Finish

LGA



Course: Same as Course LG except with Offset Mark 1A

Signal	Mark Rounding Order
LGA2	Start - 1 - 1a - 4s/4p - 1 - 1a - 4s - Finish
LGA3	Start - 1 - 1a - 4s/4p - 1 - 1a - 4s/4p - 1 - 1a - 4s - Finish
LGA4	Start - 1 - 1a - 4s/4p - 1 - 1a - 4s/4p - 1 - 1a - 4s/4p - 1 - 1a - 4s - Finish



signal	mark rounding order
PD3	Start-1-P-2-3-Finish

signal	mark rounding order
SD3	Start-1-P-2-3-Finish